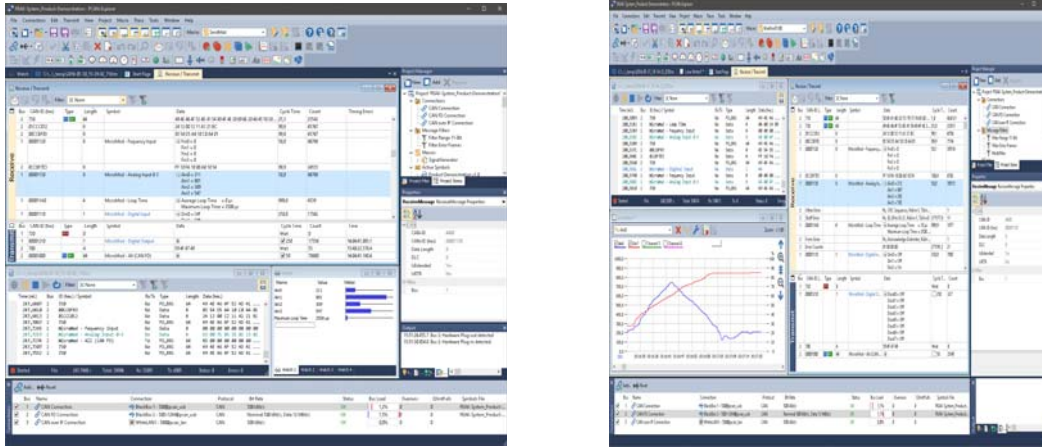


PCAN-Explorer 6 (IPES-006000) – Detailed Data Sheet



Product Description

PCAN-Explorer 6 by PEAK-System is a professional Windows software for in-depth communication and analysis of CAN and CAN FD buses. It supports transmission, monitoring, recording, and scripting for automated workflows. With features like symbolic representation, macro support, and VBScript integration, it is suited for development, diagnostics, and simulation tasks. Its modern interface allows working with multiple CAN networks simultaneously, regardless of PEAK interface type.

Key Features

- Full CAN and CAN FD support (up to 16 channels, up to 12 Mbit/s)
- Project-based management for files and settings
- Extensive trace, logging, and playback tools
- Real-time symbolic representation of CAN messages
- Graphical and line-based signal plotting (add-ins)
- Integrated editor for Symbol files, macros, and VBScript
- Multiple display options (hex, dec, ASCII) for message content
- VBScript automation with access to object model
- Callback DLLs for custom native extensions
- Extensive filtering and error monitoring

CAN and CAN FD Capabilities

- Supports CAN 2.0 A/B and CAN FD (ISO/Non-ISO switchable)
- Nominal bit rates up to 1 Mbit/s
- Data bit rates up to 12 Mbit/s
- Listen-only mode and hardware reset functions
- Detailed message overview (status, interval, ID, etc.)

Symbolic Representation

- Converts hexadecimal data into named symbols and structures
- Bit-accurate variable mapping
- Graphical signal monitoring (Watch window)
- Symbol file creation using PCAN-Symbol Editor or built-in editor

Recording and Playback

- Record CAN traffic to file or RAM (linear, dynamic, circular buffer)
- Playback support with loop and filtering options
- Export data to text or CSV for Excel analysis
- Enhanced trace file performance over version 5

Automation and Scripting

- Record macros and write scripts using VBScript
- Define behavior on message receipt, transmission, events
- Integrate DLLs for native callbacks and custom processing
- Script-triggered system actions like email, Excel logging, alerts

System Requirements

- Windows 11 (x64/ARM64), Windows 10 (x86/x64)
- PEAK-System PC CAN interface required for bus access
- USB port for installation stick or copy protection dongle
- Internet connection recommended for activation

Licensing Options

Single Computer License: Install and activate on one PC using license file (activation online, phone, or email).

Portable License + USB Dongle: Use on multiple PCs with a copy protection dongle. Enables license mobility.

Scope of Supply

- PCAN-Explorer installation files (on USB)
- License file or USB dongle depending on license type
- PCAN-Symbol Editor for Windows
- Documentation in HTML help format