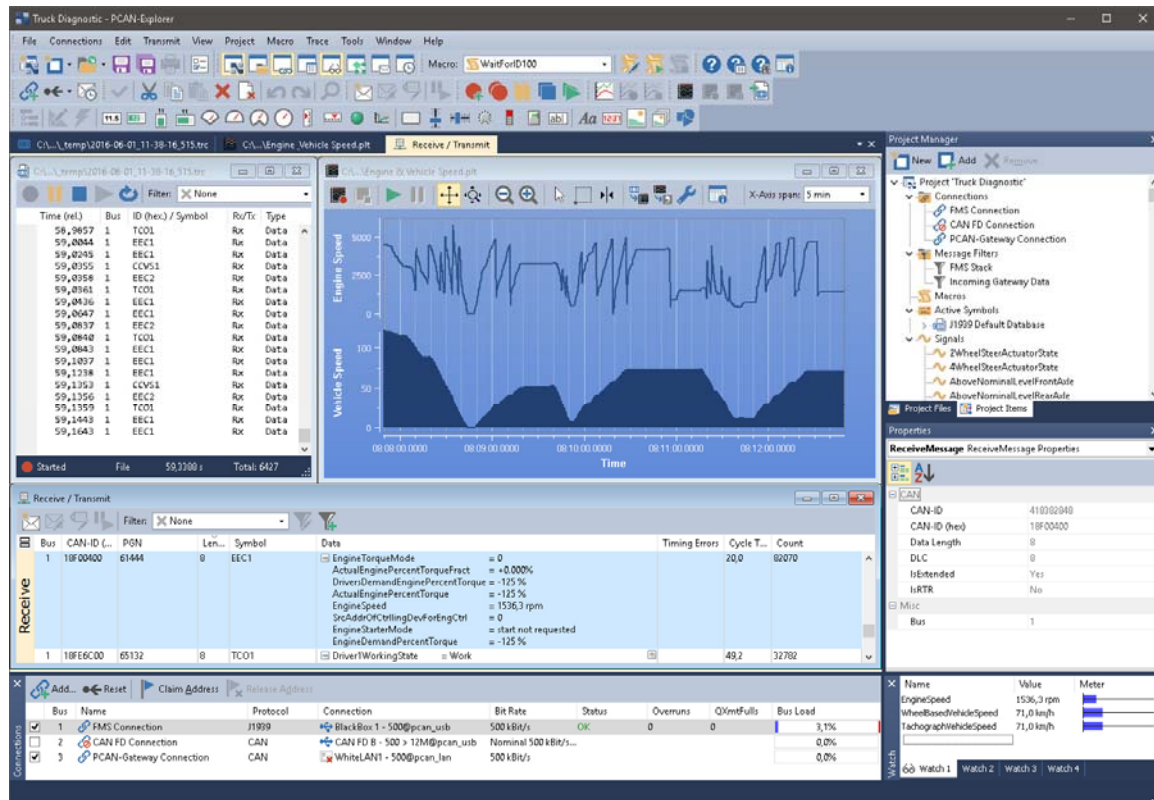


PCAN-J1939 Add-in for PCAN-Explorer



Product Overview

The SAE J1939 network protocol describes communication on a CAN bus in utility vehicles for the transmission of diagnostics data and control information. It contains a complete network definition using 29-bit CAN IDs (CAN 2.0B Extended Frame).

The J1939 Add-in for PCAN-Explorer supports all definitions established by the standard's parameter groups and provides a simple means of accessing the parameters. A database with all the definitions and parameters is also supplied (usable only with PCAN-Explorer and J1939 Add-in).

Features

- Support of the SAE J1939 network protocol
- SAE J1939 database with all the definitions and parameters
- CAN messages can be sent in broadcast form or targeted to individual control units (ECUs)
- Addressing of up to 254 ECUs

- • Supports multi-packet messages
- • Monitor window for displaying and requesting J1939 Diagnostic Trouble Codes (DTCs)
- • Note: SAE J1939-22 extension for CAN FD is currently not supported

System Requirements

- • PCAN-Explorer 6
- • Windows 11 (x64/ARM64), 10 (x86/x64)
- • Free USB port for installation stick and copy protection dongle

Note: Software delivery on USB stick. Alternative installation media or download on request.

Ordering Information

Designation	Part No.
J1939 Add-in 6	IPES-006089

Scope of Supply

- • Installation files for J1939 Add-in
- • Single computer license or portable license with USB copy protection dongle
- • Documentation in HTML help format